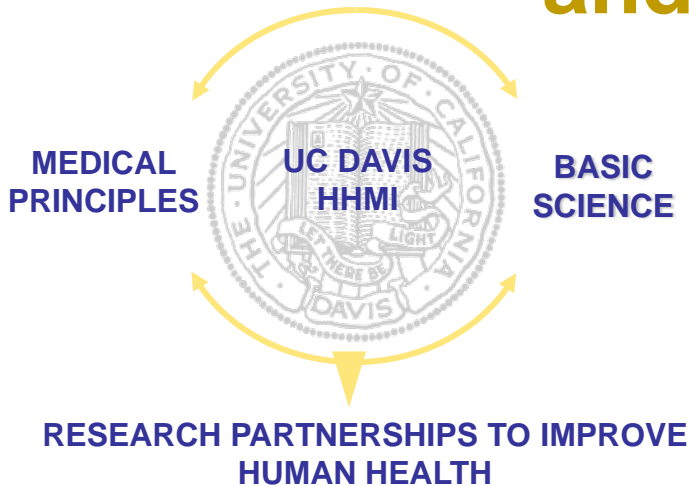


UC DAVIS
HEALTH SYSTEM



UC Davis HHMI IMBS & CTSC (HHMI model for CTSC T32)

**Leveraging for creativity
and sustainability**



Ann Bonham, Ph.D.

**HHMI Program Director
Chair CTSC Executive Committee
Executive Associate Dean, Academic Affairs**



Guiding Principles

Have a shared vision

*Involve the
right people*



Implement the vision

*Leverage resources
and partnerships*



A Shared Vision

...an innovative, enduring translational training program that prepares and inspires PhD students to form teams of physicians, basic scientists and engineers to improve human health.

Changing culture through clinical immersion and team-based mentoring



A Shared Premise

Aside from discipline-based expertise, the **ability to work *effectively* in teams with other disciplines** may be the most important resource for accomplishing the envisioned future of biomedical research....



Shared Competencies

1. Knowledge of the clinical problem
2. Culture, language, challenges of other disciplines
3. Confidence in ability to apply research to improve human health
4. Team-work, leadership and communication skills
5. Self and peer evaluation
6. Diversity, disparities, empathy

Right People

Anne Knowlton, MD
Co-Director
T32 PI

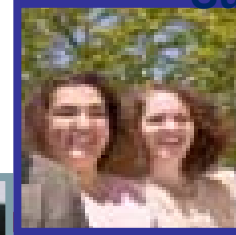


Fred Meyers, MD
Chair, Internal Medicine
Former K30 PI
Director Education, CTSC
HHMI Co-Director

Nipavan Chiamvimonvat, MD
Co-Director
T 32 PI



Julie Rainwater, PhD
Director of Evaluator,
HHMI, CTSC

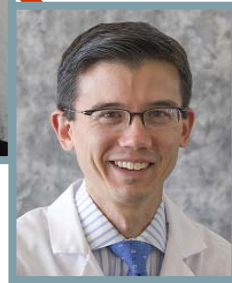


Karnjit Johl, MD
Suzanne Edson-Ton, MD

Uma Srivatsa, MD
Cardiologist
Clinician Mentor



Jason Rogers, MD
Assoc Professor
Internal Medicine



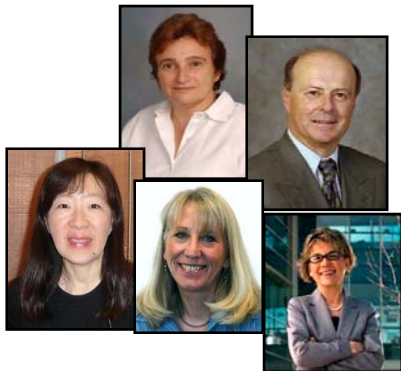
Tonya Fancher, MD
Assoc Professor
Internal Medicine

Shared junior clinical faculty



Right People

HHMI/CTSC Shared Leadership & Staffing



**Shared Administrative Support
CTSC, Dean's office, HHMI**



Leverage Resources and Partnerships: HHMI and CTSC

Shared Curricular Resources

- Summer Institute
- New CTSC Course: Intro to Clinical Research
- HHMI Course: Molecular Mechanisms Disease
- Team-based Training, Leadership, Peer Evaluation
- HHMI research presentations: to CTSC K30 scholars



Leverage Resources and Partnerships: HHMI and CTSC

Shared **Ex**tracurricular Resources

Field Trips:

Stem Cell, CTSC T32, T32, HHMI:
Annual NIH-funded Gene Symposium (Napa)

Parties, Parties, Parties





Leverage Resources and Partnerships: HHMI and CTSC

Shared Educational Outcomes

👉 **“New Designated Emphasis in Translational Research”**

Initiated by HHMI

Now available to CTSC T32

Soon available to all T32 meeting requirements

Optional Masters in Clinical/Translational Research

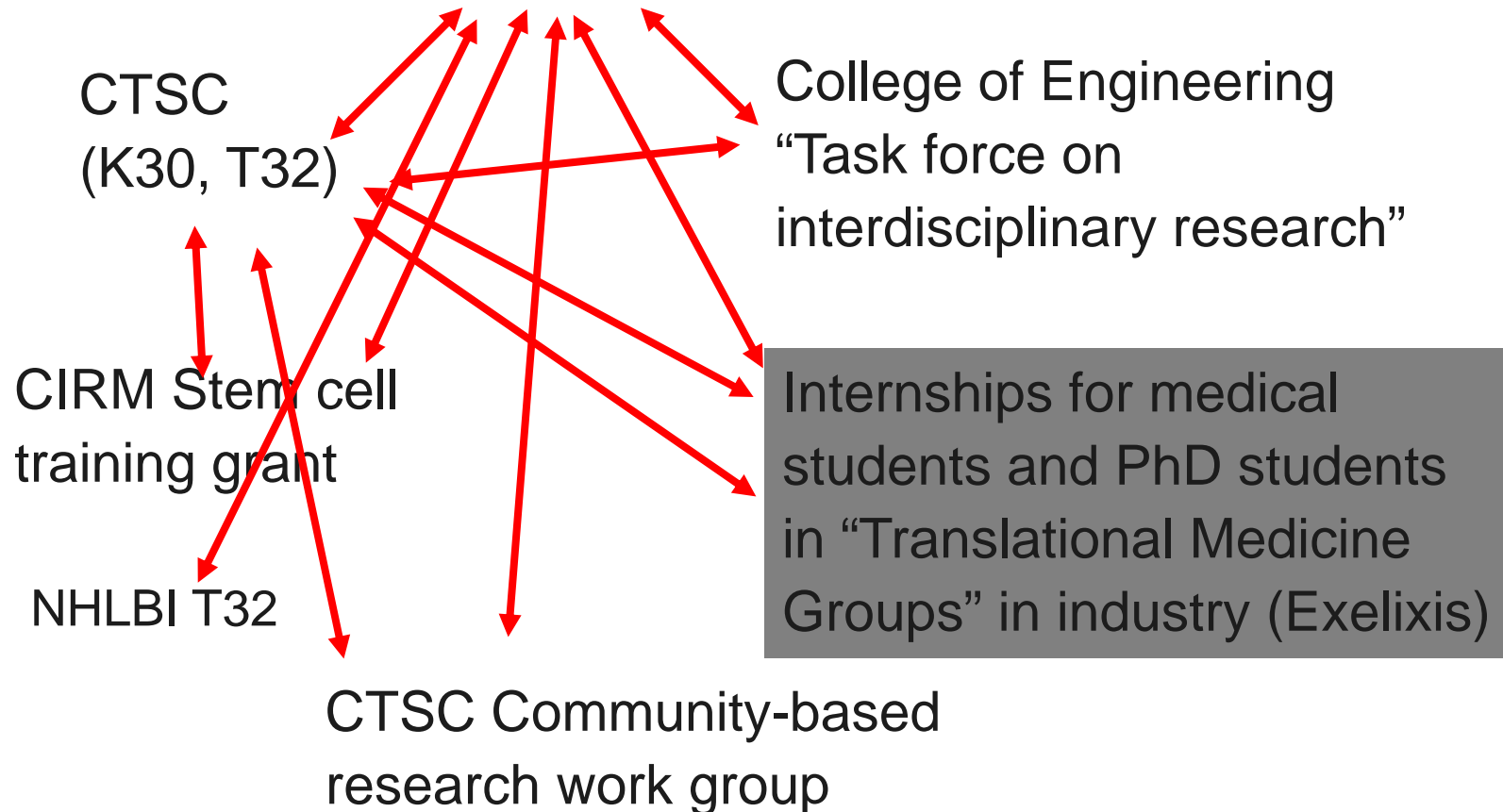
Through CTSC

Available to HHMI students



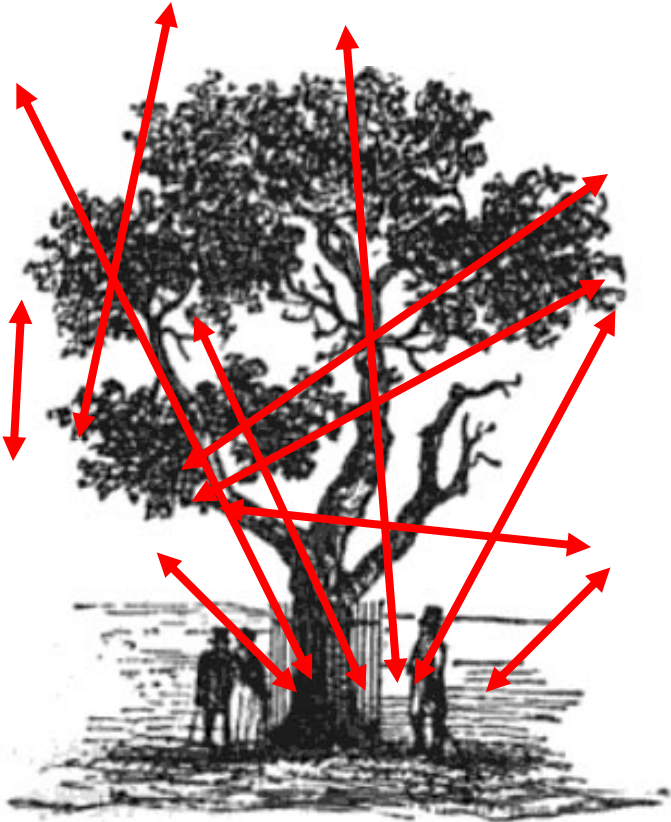
Leveraging Partnerships

HHMI “Med into Grad”





Guiding Principles for Sustainability



HHMI “Med into Grad”

